

# BERT | FRANK

## BIDE WALL LIGHT

### Specification Sheet

#### Description:

Designed to be used in multiples, overlapping and intertwining, to create beautiful sculptural silhouettes which exude a soft warm ambient glow, Bide is a playful, contemporary modular wall light which can transform and elevate any interior style. Both functional and decorative, the design combines sophisticated brushed brass and delicate alabaster with an IP rated integral LED.

#### Light Source:

- 6W IP rated LED

#### Voltage:

- UK/EU - 230V Integral Mains Dimmable Driver  
- US - Currently unavailable

#### Material Finish:

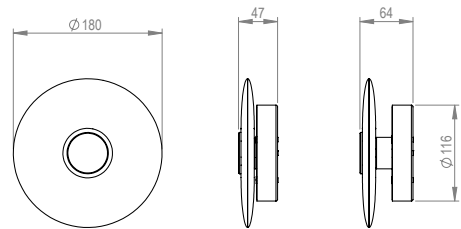
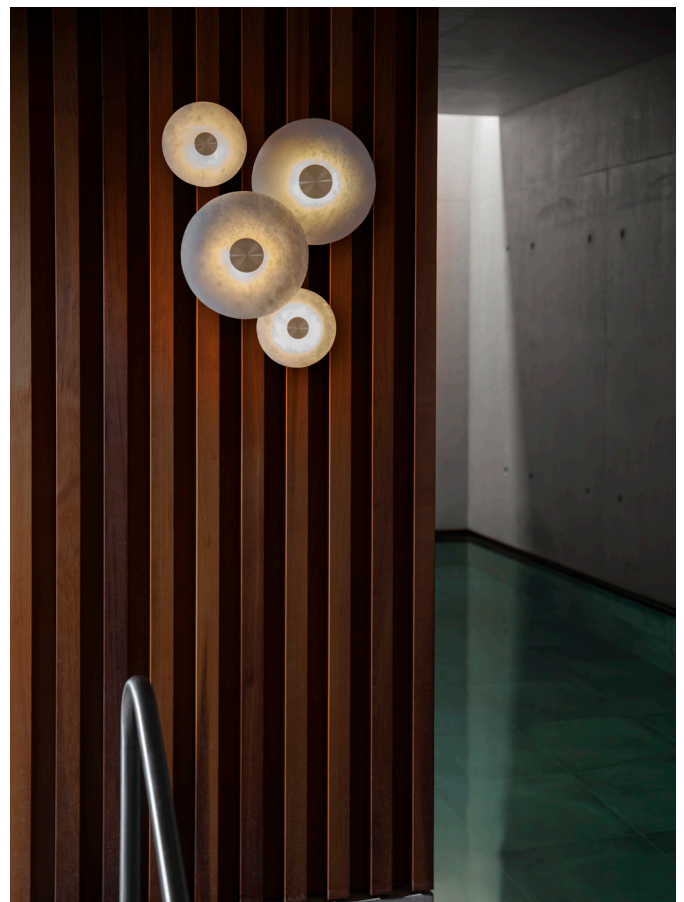
- Brass lacquered as standard  
- Brass or Nickel Metalwork  
- Alabaster Stone Facade

#### Weight:

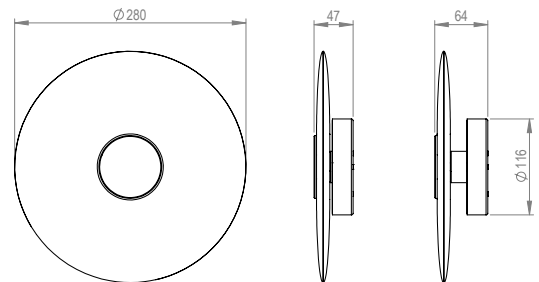
- Large = 2.3kg  
- Small = 1.3kg

#### IP Rating:

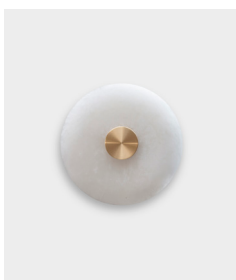
- Suitable for wet areas  
- Correct installation of fixture in a wet area is the responsibility of the installer.



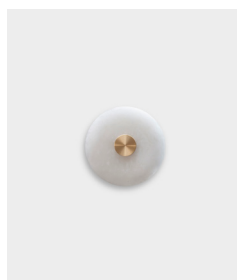
Small



Large



Large



Small

