



Nara

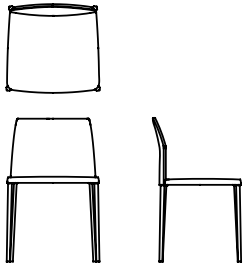
Piergiorgio Cazzaniga - 2014

Four slim aluminium legs support an ample, removable padded seat and backrest, a shape that gives a deep feeling of comfort. This is the chair design created by Piergiorgio Cazzaniga.



Available models

Upholstered chair with removable fabric, leather or eco-leather. Seat and back in flexible polyurethane with seat elastic belt. Die-cast aluminium legs.



Nara

width 50 cm
depth 51 cm
total height 78 cm
seat height 46,5 cm

Finishing

Structure

Lacquers



B42
GRAFITE



B59 NERO
OPACO

Metals



A18
OSSIDIANA
OPACO



A27
TITANIUM

Covering

Leather



M50
BIANCO



M52 TESTA
DI MORO



M53 NERO



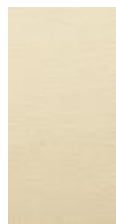
M55 ROSSO



M58
BORDEAUX



M59
SABBIA



M61 PANNA



M69
ZAFFERANO

Leather - NUVOLA



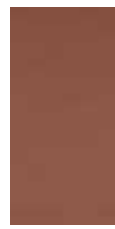
M73 NEVE



M74 BRUNO



M75 OASI



M76
TABACCO



M77 NERO



M78
CAMELIA



M79 KAKI

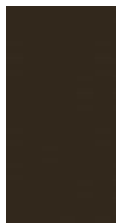


M80
BORDEAUX

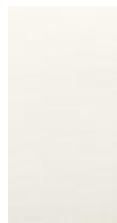


M81
ANTRACITE

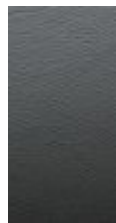
Eco Leather



Q13 CAFFE



R02
BIANCO



R06
ANTRACITE



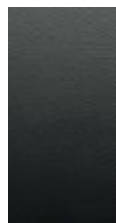
R07 ECRU



R18 ROSSO



R19
AMARANTO

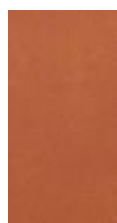


R29 NERO

Eco Leather- GRAIN



R45
SAHARA



R40
COGNAC



R41 FUMO



R42
TABACCO



R43
ARDESIA



R44
CARBONE

Eco Leather - GLOVE



R46 LATTE



R48 PIETRA



R49 PELTRO



R51 BISTRO



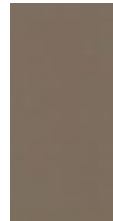
R52 MORO



R53 BRUNO



R54 CUIOIO



R55
CANNELLA



R56 OLIO



R57
GRANATA

Fabric - DANDY (Cat. A)



H65 CORDA



H66 ECRU



H67
TORTORA



H68
MELOGRANO



H69 TORBA



H70
PAGLIERINO



H71 GIADA



H72
TURCHESE



H73 DENIM



H74
ANTRACITE



H76 FANGO

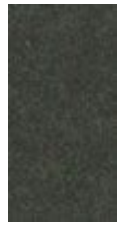


H75 FUMO

Fabric LODEN (Cat. A)



H77 IUTA



H78 MOCA



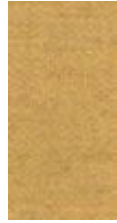
H79 PECE



H80
GRANITO



H81 BRINA



H82
BANANA



H83
ARAGOSTA



H84
VERMIGLIO



H85 BOSCO



H86
PISTACCHIO



H87 CIANO

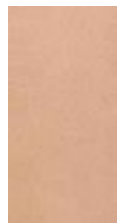


H88
INCHIOSTRO

Fabric SOFTY (Cat. B)



H27 GESSO



H28 CIPRIA



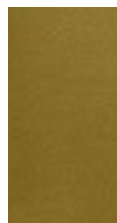
H29
MARSALA



H36
PAPAYA



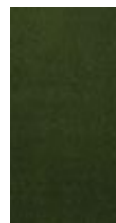
H37
NOCCIOLA



H38 CEDRO



H39
CILIEGIA



H46
MUSCHIO



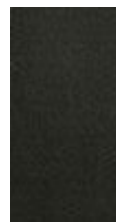
H47
PAVONE



H48
OCEANO



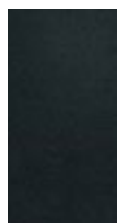
H49 VISIONE



H51 CAFFÈ



H52 TITANIO



H53
ARDESIA

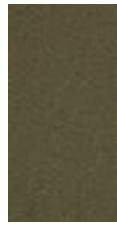
Fabric - MESSENGER (Cat. C)



T86 CENERE



T87
CANAPA



T88
TORTORA



T89 ROSA
PASTELLO



T90
SENAPE



T91
TERRACOTTA



T92
SCARLATTO



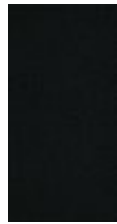
T93
FORESTA



T94
OTTANIO



T95
PRUSSIA



T96
CARBONE



T97
ACCIAIO



T98 NERO