



Sand Air

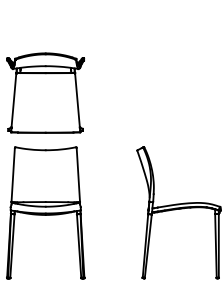
Pocci + Dondoli - 2003

Ultralight, comfortable and sophisticated mesh enhances the unique characteristics that have made the Sand design famous. The PVC-coated nylon mesh ensures excellent breathability. Available in different colours.



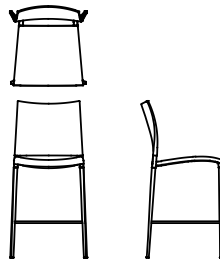
Available models

Stacking chair with or without armrests, die-cast aluminium frame. Seat and back in mesh made of polyester thread covered with PVC (Sand Air) and PVC + hemp (Sand Air Canatex / Duo) in different colours. Lacquered frame versions also available for outdoor use. The barstool (not stackable) has the same characteristics as the chair.



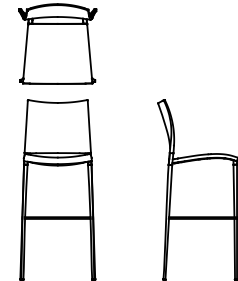
Sand Air

width 47 cm
depth 54 cm
total height 82 cm
seat height 45 cm



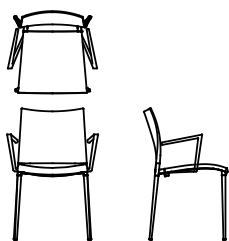
Sand Air stool

width 47 cm
depth 54 cm
total height 99 cm
seat height 64 cm



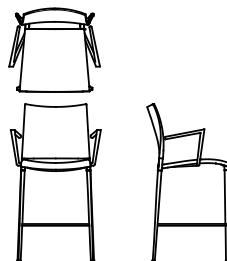
Sand Air high stool

width 47 cm
depth 54 cm
total height 115 cm
seat height 80 cm



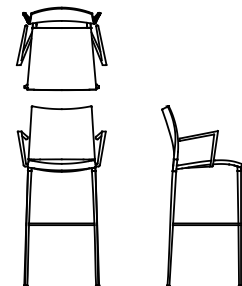
Sand Air
with armrest

width 53,5 cm
depth 54 cm
total height 82 cm
seat height 45 cm
arm rest height 63 cm



Sand Air stool
with armrest

width 53,5 cm
depth 54 cm
total height 99 cm
seat height 64 cm
arm rest height 82 cm



Sand Air high stool
with armrest

width 53,5 cm
depth 54 cm
total height 115 cm
seat height 80 cm
arm rest height 98 cm

Finishing

Structure

Lacquers



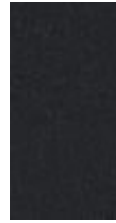
B13
SABBIA



B22
MARRONE
BUNGEE



B41
TORTORA



B42
GRAFITE



B59 NERO
OPACO



B62
BIANCO
OPACO

Metals



A18
OSSIDIANA
OPACO



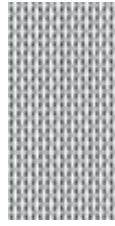
A08
ALLUMINIO
LUCIDO

Seat

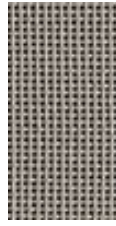
Net



S03
BIANCO



S07
MELANGE



S21
CANATEX
TORTORA



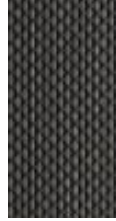
S22
CANATEX
SABBIA



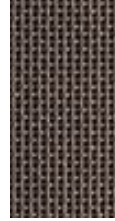
S24
CANATEX
NERO



S27 GRIGIO
PIOMBO



S28 GRIGIO
GHISA



S31
CANATEX
MARRONE
SCURO



S23
CANATEX
PAGLIA



S30
CANATEX
MARRONE
MEDIO