

**SHADE  
ELEMENTS**



# Fetuna Cassette






As innovators of outdoor-living solutions in New Zealand for many years, Shade Elements has become an industry leader of awnings, screens and retractable pergolas.

Developed in France and custom manufactured in New Zealand to withstand our harsh elements, The Fetuna Cassette awning combines maximum protection and modern design with minimal maintenance. The fabric skin and awning mechanism are completely protected when retracted, ensuring a longer product life and superior functionality. Made with quality aluminum and stainless-steel components, the Fetuna Cassette is built to last and comes with a five-year warranty.



**We create versatile, beautiful outdoor spaces that connect seamlessly to homes and gardens, while providing shelter from the elements.**

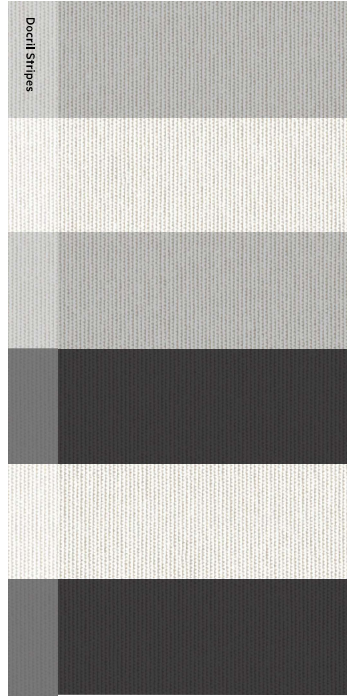
Features

WIDTH X EXTENSION	OPERATION	CASE COLOURS
MIN – 1978 X 1500 mm	Manual or Automated	Customised to Dulux powder-coat range
MAX – 7000 x 4000 mm		
		HARDWARE COLOUR
FABRIC	AUTOMATION OPTIONS	Warm White Pearl 
Docril (acrylic canvas) – 80 colours	Sun & Wind sensor	Silver Pearl 
Soltis Lounge 96 – 21 colours	Motion sensor	Matt Charcoal 

# Fabric

Colour - the key to creating the perfect environment for you. Our hardwearing fabric range has been carefully developed to make the very best outdoor living accents.

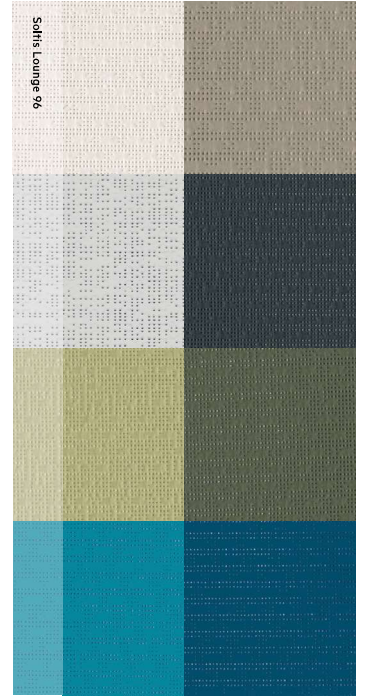
Visit [shadeelements.co.nz](http://shadeelements.co.nz) to see the full fabric collection.



Designed and manufactured in Spain and known for its superb quality with an extensive colour palette.



Docril offers an impressive selection of 80 vibrant colours to suit any décor and comes with a 10 year UV warranty.



Soltis Lounge 96 is an optimised screen fabric that creates a comfortable ambience for outdoor living spaces. Designed and manufactured in France by Serge Ferrari, Soltis Lounge 96 is lightweight, durable and 100% recyclable. Available in 21 colours.

# Automation

Awnings can be automated to respond to the touch of a button, allowing you to relax and enjoy the ease of remote operation.



Neo App - used in conjunction with Neo Hub



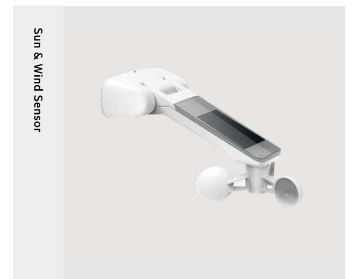
Navigator 5 Channel Remote



Navigator 8-16 Channel Remote



Motion Sensor



Sun & Wind Sensor

[SHADEELEMENTS.CO.NZ](http://SHADEELEMENTS.CO.NZ)

