

**SHADE
ELEMENTS**



Horizon Monobloc



As innovators of outdoor-living solutions in New Zealand for many years, Shade Elements has become an industry leader of awnings, screens and retractable pergolas.

The Horizon Monobloc is elegantly engineered using European technology and styling. Providing robust protection from the elements, it allows you to merge indoor living with the outdoors all-year round.




Made with quality aluminium and stainless steel, the Horizon Monobloc is easily operated manually or automated with the press of a button. When automated, a wind or motion sensor can be added to retract the awning during high-impact conditions. An aluminium hood can also be included for a streamlined protected finish. The Horizon Monobloc comes with a five-year warranty and has undergone rigorous testing to ensure it withstands extreme conditions. Through sophisticated design and technology, our products make the most of living, without the need to build or renovate.



We create versatile, beautiful outdoor spaces that connect seamlessly to homes and gardens, while providing shelter from the elements.



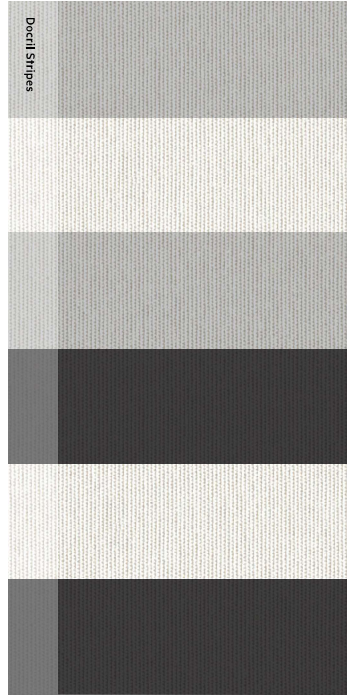
Features

WIDTH X EXTENSION	OPERATION	PROTECTION
MIN – 1890 X 1500 mm	Manual or Automated	Hood (optional)
MAX – 13792 X 4000 mm		
		HARDWARE COLOUR
FABRIC	AUTOMATION OPTIONS	Warm White Pearl 
Docril (acrylic canvas) – 80 colours	Sun & Wind sensor	Silver Pearl 
Soltis Lounge 96 – 21 colours	Motion sensor	Matt Charcoal 

Fabric

Colour - the key to creating the perfect environment for you. Our hardwearing fabric range has been carefully developed to make the very best outdoor living accents.

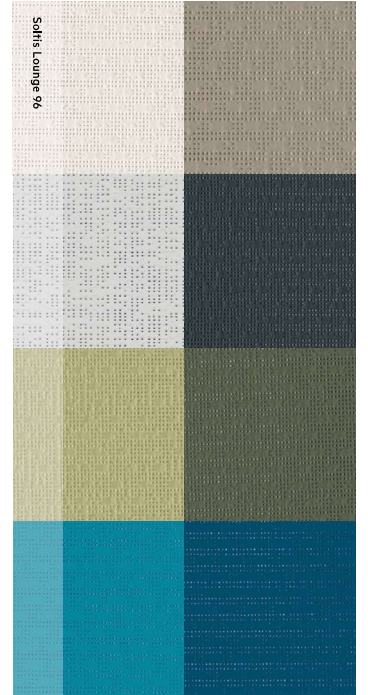
Visit shadeelements.co.nz to see the full fabric collection.



Designed and manufactured in Spain and known for its superb quality with an extensive colour palette.



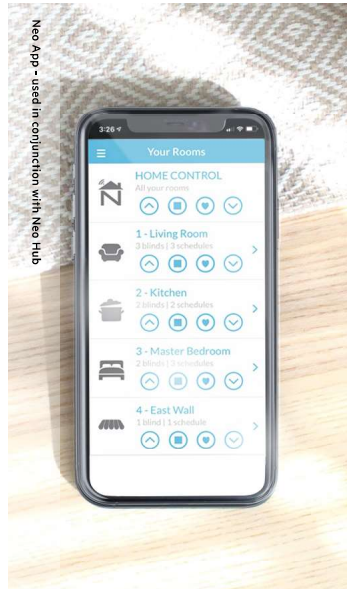
Docril offers an impressive selection of 80 vibrant colours to suit any décor and comes with a 10 year UV warranty.



Soltis Lounge 96 is an optimised screen fabric that creates a comfortable ambience for outdoor living spaces. Designed and manufactured in France by Serge Ferrari, Soltis Lounge 96 is lightweight, durable and 100% recyclable. Available in 21 colours.

Automation

Awnings can be automated to respond to the touch of a button, allowing you to relax and enjoy the ease of remote operation.



Neo App - used in conjunction with Neo Hub



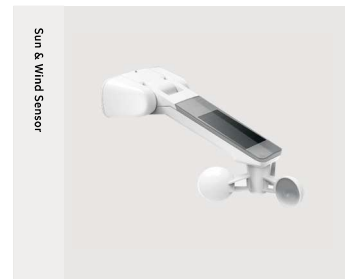
Navigator 5 Channel Remote



Navigator 8-16 Channel Remote



Motion Sensor



Sun & Wind Sensor

[SHADEELEMENTS.CO.NZ](https://shadeelements.co.nz)

