

# Softer than Steel

“A section of the bench has flipped up and turned into the backrest. Poles wrap around each other to become a coat stand. By adding flipped, bent and wrapped details to metal sheets and rods, the ordinarily hard metal gain new functionality and a light, flexible feel, as though the metal has become paper or cloth .

[Nendo]



Softer than Steel

Coat stand in matt lacquered steel bar.



---

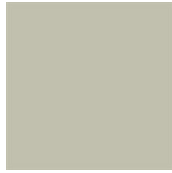
Softer than steel 686

height 169 cm  
width 30 x 32 cm

---

Structure

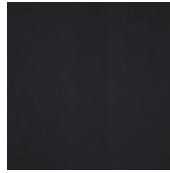
Lacquers



B13 MATT SABBIA



B22 BUNGEE BUNGEE  
BROWN



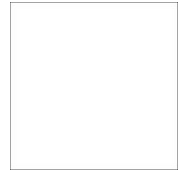
B42 GRAFITE



B56 RUGGINE



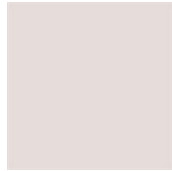
B59 MATT BLACK



B62 MATT WHITE



B70 LAMPONE RED



B73 QUARZO PINK



B82 GREY



B85 MOSS GREEN